

INVERTER SPEC

PRODUCT : CCFL BACKLIGHT INVERTER

MODEL NAME :INV2L-2C(rev.B)

WRITTEN	CHECKED	APPROVAL

Head Office : 600S Jefferson St. Unit K Placentia, CA 92870 USA

TEL : +1-714-223-7111

FAX : +1-714-223-7711

Vertex LCD Inc.

MODEL	INV2L-2C
REV.	B
DATE	2004.10.27

1. APPLICATION

This Spec. Sheet applies to 6 .4" & 10.4" LCD Monitor Inverter apparatus which is produced and sold for DIGITAL DEVICE

2. SUITABLE LOAD

LCD MODULE : 6 .4" & 10.4" "L"Type 2 LAMP TFT LCD

3. ELECTRICAL CHARACTERISTICS

1)Absolute Maximum Ratings

ITEM	SYMBOL	SPEC	UNIT	REMARKS
INPUT VOLTAGE1	Vin 1	11.0~ 13.0	V	
OPERATING TEMPERATURE	Top	0 ~ 5 0	C	
STORAGE TEMPERATURE	Tstg	-30 ~ 80	C	
RELATIVE HUMIDITY	RH	90	%	

2)Control Signal

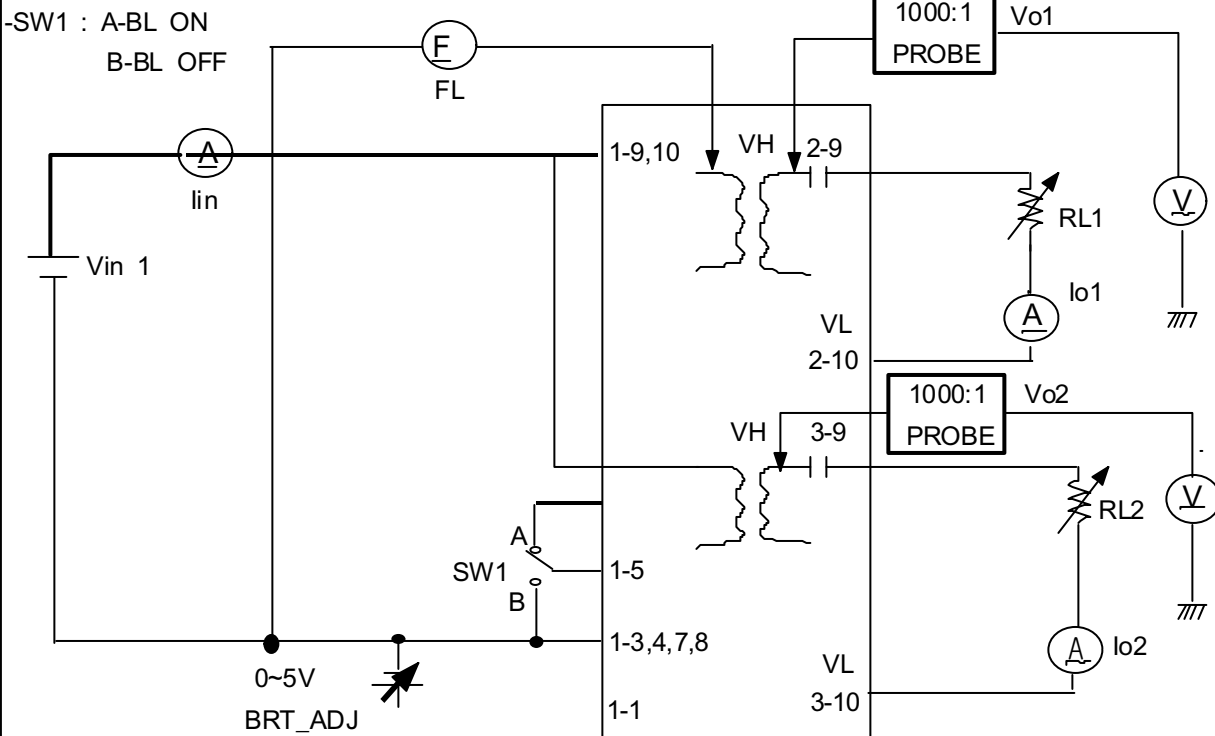
PIN NO	SYMBOL	STATUS	ACTION	REMARKS
CN1 #6	BKLT_ON	HIGH	LAMP(CCFL)-ON	2.4V~5.2V
		LOW	LAMP(CCFL)-OFF	0 ~ 0.8V

MODEL	INV2L-2C
REV.	B
DATE	2004.10.27

3)Output Characteristics

ITEM	SYMBOL	CONDITION			SPECIFICATION			UNIT
		Vin1(V) (DC-IN)	BRT-ADJ	RL (Ref)	MIN	TYP	MAX	
OUTPUT CURRENT	Io1 (max)	12	0V	120+/-0.5	7.3	8.2	8.9	mArms
	Io1 (min)	12	5V	120+/-0.5	2.3	3.4	4.5	
	Io2 (max)	12	0V	120+/-0.5	7.3	8.2	8.9	
	Io2 (min)	12	5V	120+/-0.5	2.3	3.4	4.5	
INPUT CURRENT	Iin	12	0V	120+/-0.5	750	920	1000	mADC
FREQUENCY	F1	12	0V	120+/-0.5	40	50	60	KHz

4)Test Circuit



4. INTERFACE

- 1) CN1 CONNECTOR : 12505WR-10A00(YEONHO)
or 53261-1090(MOLEX)

PIN NO	SYMBOL	REMARK
9,10	DC-IN(Vin)	DC INPUT POWER(12V)
2,6	N.C	NO CONNECTION
5	BL ON/OFF	CCFL DRIVE SIGNAL
1	BRT_ADJ	0 ~ 5V
3,4,7,8	GND	GND

- 2) CN2 CONNECTOR : 20015WR-05A00(YEONHO)
or 68174-0217(MOLEX)
or SM02(8.0)B-BHS-1-TB(JST)

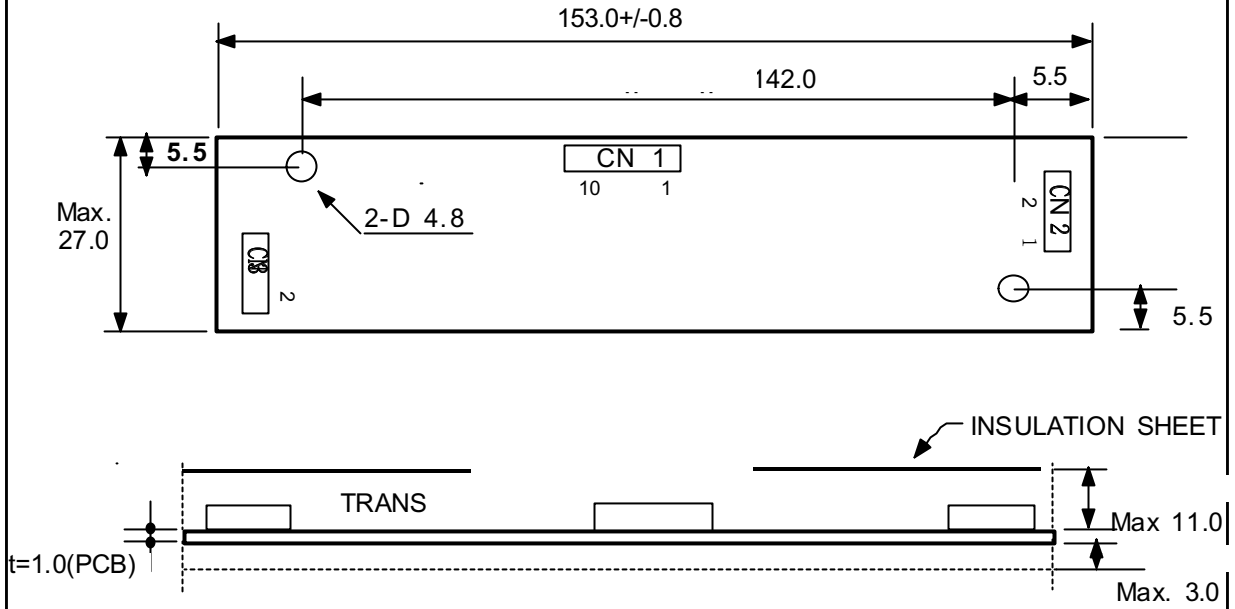
PIN NO	SYMBOL	REMARK
1	HOT	HIGH
2	COLD	LOW

- 3) CN3 CONNECTOR : 20015WR-05A00(YEONHO)
or 68174-0217(MOLEX)
or SM02(8.0)B-BHS-1-TB(JST)

PIN NO	SYMBOL	REMARK
1	HOT	HIGH
2	COLD	LOW

MODEL	INV2L-2C
REV.	B
DATE	2004.10.27

5. OUTLINE DIMENSION(UNIT:mm)



TOLERANCE : +/- 0.3mm