

SPECIFICATION FOR APPROVAL

Description : **TFT LCD BACKLIGHTING INVERTER**

Customer :

Model Name : **INVDIM-4L2C**

Customer's Confirmation

Supplier's Confirmation

Approved By : _____

Approved By : _____

Reviewed By : _____

Reviewed By : _____

Prepared By : _____

Prepared By : _____

Please return 1 copy for our confirmation with your signature and comments.

TABLE OF CONTENTS

1. Electrical Characteristics
2. Functional Pin Description
3. Mechanical Drawings

1. Electrical Characteristics

► Input Voltage(Vdc) : 11.0 ~13.0

No.	Items (Unit)	Sign.	Condition		Min.	Typ.	Max.
1	Input Current (A)	I _{in}	V _{in} =12V	CTRL=0V	0.3	0.5	0.7
				CTRL=5V	2.2	2.4	2.6
2	Output Current 1,2(mA)	I _{out1}	V _{in} =12V	CTRL=0V	0	-	1.0
				CTRL=5V	11.0	12.5	14.0
3	Output Current 3,4(mA)	I _{out2}	V _{in} =12V	CTRL=0V	0	-	1.0
				CTRL=5V	11.0	12.5	14.0
4	Lamp Frequency (kHz)	f	V _{in} =12V	CTRL=0V	50	55	60
5	ON/OFF Control	ON	V _{in} =12V, ON/OFF=5V		Normal Operation		
		OFF	V _{in} =12V, ON/OFF=0V		Shunt-down (Lamp off)		
6	Dim Adjust (Lamp Current Control)	CTRL	CTRL=5V,Max Current		0.0 ~ 5.0 Volt.		
			CTRL=0V,Min Current				
7	Kick-Off Voltage(V _{rms})	V _{k-off}	Kick-Off		MORE THAN 1200		

2. Functional Pin Description

2-1. Input Connector CN1 : SMAW200-08 (YEON-HO,MOLEX,JST)

Pin No.	Symbol	Description
1,2	Vin	Input Voltage : 12V \pm 1V
3,4	GND	GND.
5	ON / OFF (ENABLE)	Power System Return (5V:ON, 0V:OFF)
6	CTRL	Dim Adjust, Apply 0V ~5Vdc to Control Lamp
7	+5V OUT	VSYNC-IN
8	-	NO CONNECTION

2-2. Output Connector CN2,CN3 : 20015WR – 07A00 (YEON-HO,MOLEX,JST)

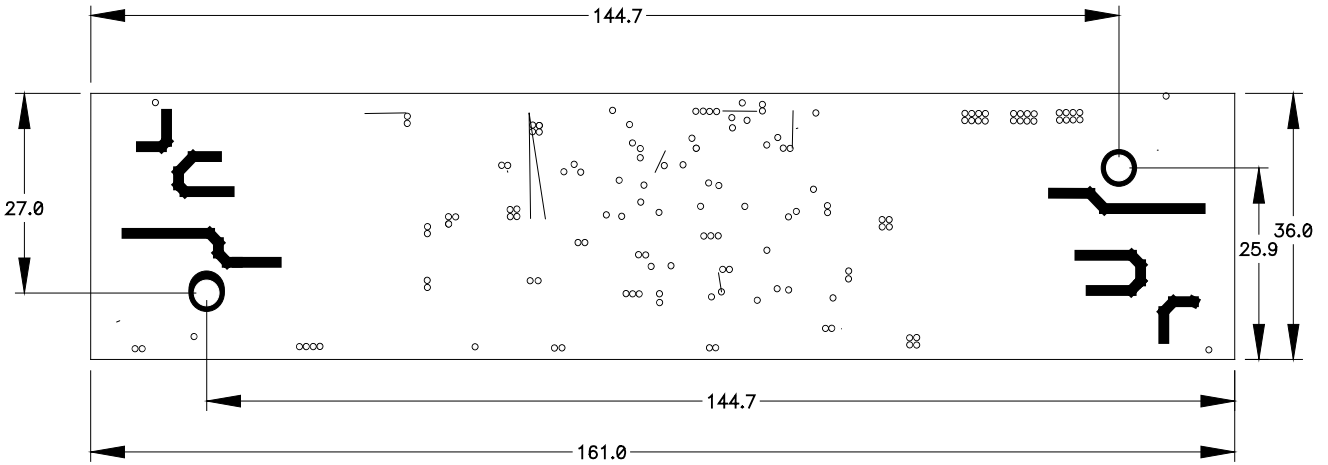
Pin No.	Symbol	Description
1	Lamp H1	High Voltage Connection to high side of Lamp.
2	Lamp H2	High Voltage Connection to high side of Lamp.
3	-	NO CONNECTION
4	Lamp L	Low Voltage Connection to low side of Lamp.

3. Mechanical Drawings

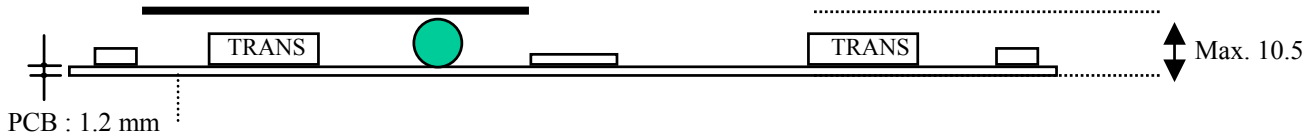
3-1.P.W.B

*. Unit : mm

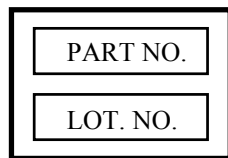
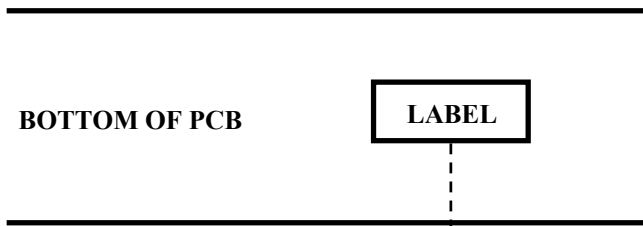
*.Tolerance : $\pm 0.2\text{mm}$



3-2.Transformer & Insulator



3-3.Marking



*. PART NO. :

*. LOT NO. : F ○ ○ ○ ○ ○ ○ ○ ○

LINE YEAR MONTH DAY